

HOTEL ROMANIC



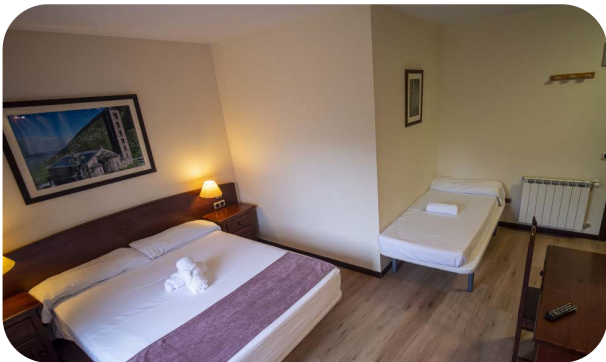
- Meeting & games room
- Free Wi-fi

One thing of which you're guaranteed if you stay in Cerler, is the superb locations of the hotels and the Edelweiss is no exception. A short walk of less than 400m takes you from the front door to the foot of the slopes. The views down the Benasque Valley are some of the finest in Spain's Aragon region.

The hotel has an in-house 'animations' team who are there to look after your group away from the slopes, keeping them occupied with a range of games and activities. There's also a sports centre nearby and group sports activities can also be taken there to offer a different kind of entertainment.

The large dining room comfortably caters for large groups and meals are served in a buffet style to ensure plenty of choice and nutrition. Breakfast and evening meals are both taken at the hotel.

The rooms are large and most are based on occupancies of four people, but twins and singles can be provided on request.



SCHOOL & COLLEGE SKI TRIPS

FAQS

IS THERE A MEETING ROOM?

Yes, there is a large meeting room in the hotel.

DOES THE HOTEL HAVE 24 HOUR ACCESS?

Yes, the hotel does have 24hr access.

DOES THE HOTEL HAVE A SAFE?

Yes, the hotel has a safe for clients to use as well as individual safes in some rooms.

DO ANY BEDROOMS HAVE BALCONIES?

Yes, some of the bedrooms have balconies.

WHAT AMENITIES ARE THERE LOCALLY?

Nearby in the village there are a number of small shops, cafes, restaurants, a pharmacy, mini-market and ATM.

WHAT ARE THE ARRANGEMENTS FOR SKI EQUIPMENT?

All conveniently stored in the purpose built ski hire, at the foot of the slopes.

ARE SINGLE ROOMS AVAILABLE FOR STAFF?

Yes, single rooms can be made available for a supplement.

